



RIVER
PARTNERS

Dos Rios State Park

13 August 2024

Julie Rentner, President
Austin Stevenot, Senior Restoration Manager

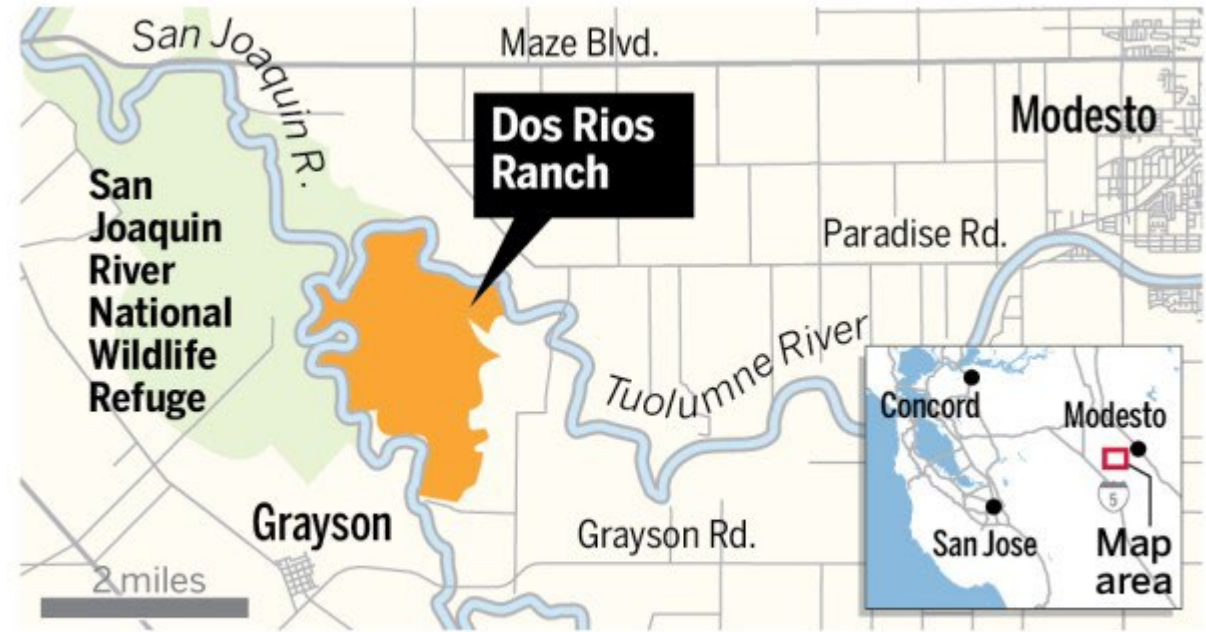
DOS RIOS



Wednesday, June 12
8:30 a.m.-2 p.m.
Ceremony at 9 a.m.



3599 Shiloh Road
Modesto, CA 95358



BAY AREA NEWS GROUP



Park of the Future: Multi-Benefit Floodplain Restoration



- **Biodiversity**
- **Flood Safety & Climate Resilience**
- **Vibrant Communities**
- **Water Conservation & Aquifer Replenishment**
- **Native Seed Supply & Restoration Jobs**



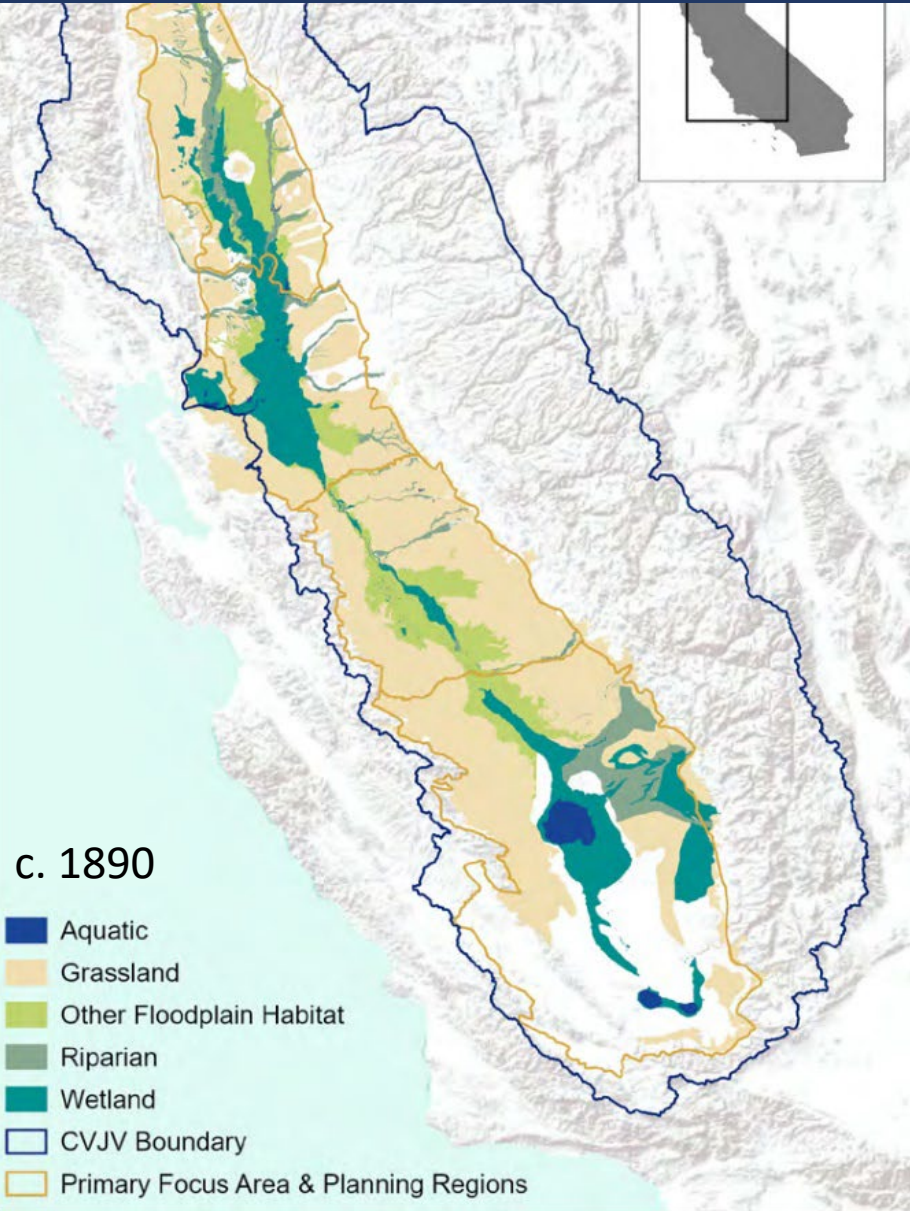


2018



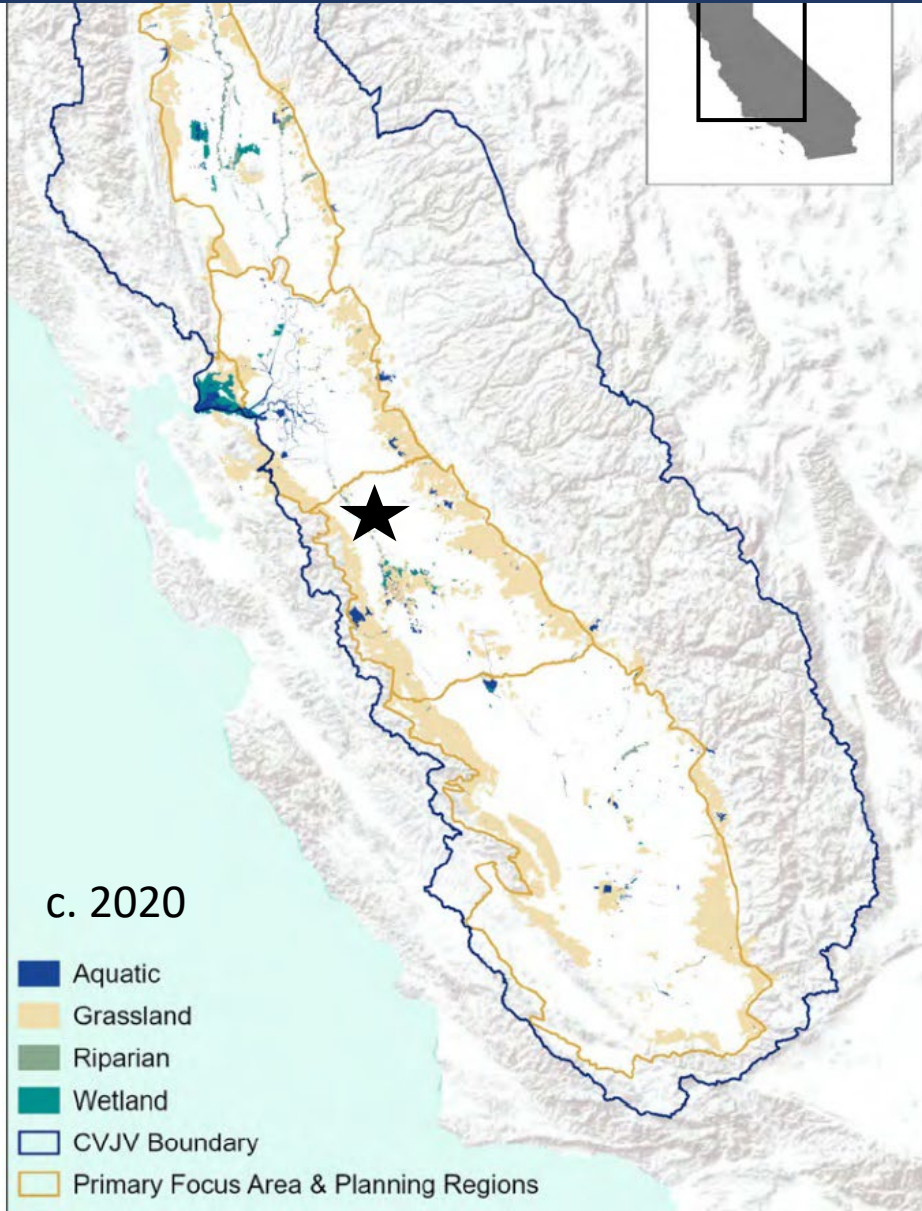
2022

Central Valley Historical Ecology



c. 1890

- Aquatic
- Grassland
- Other Floodplain Habitat
- Riparian
- Wetland
- CVJV Boundary
- Primary Focus Area & Planning Regions

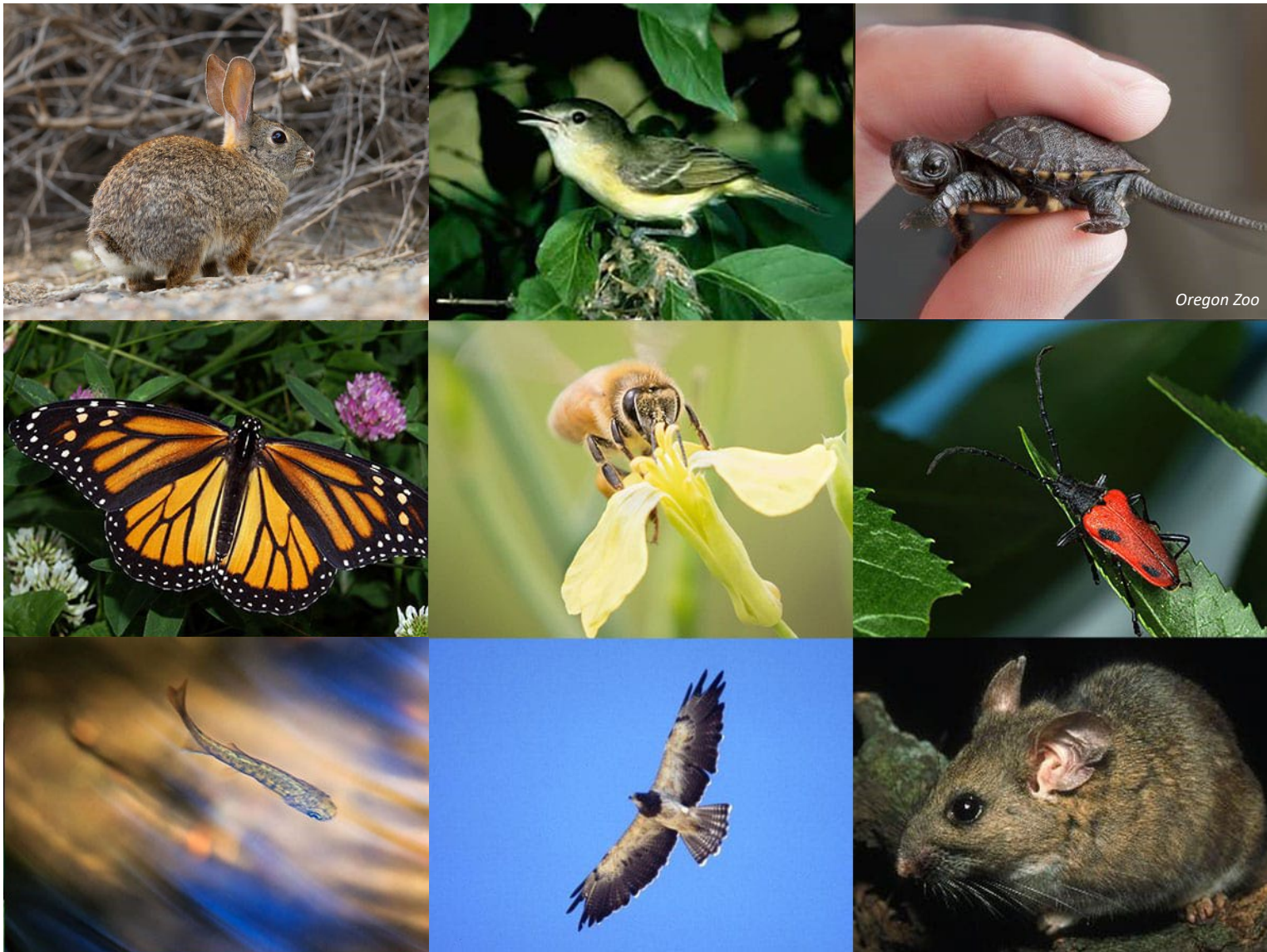


c. 2020

- Aquatic
- Grassland
- Riparian
- Wetland
- CVJV Boundary
- Primary Focus Area & Planning Regions

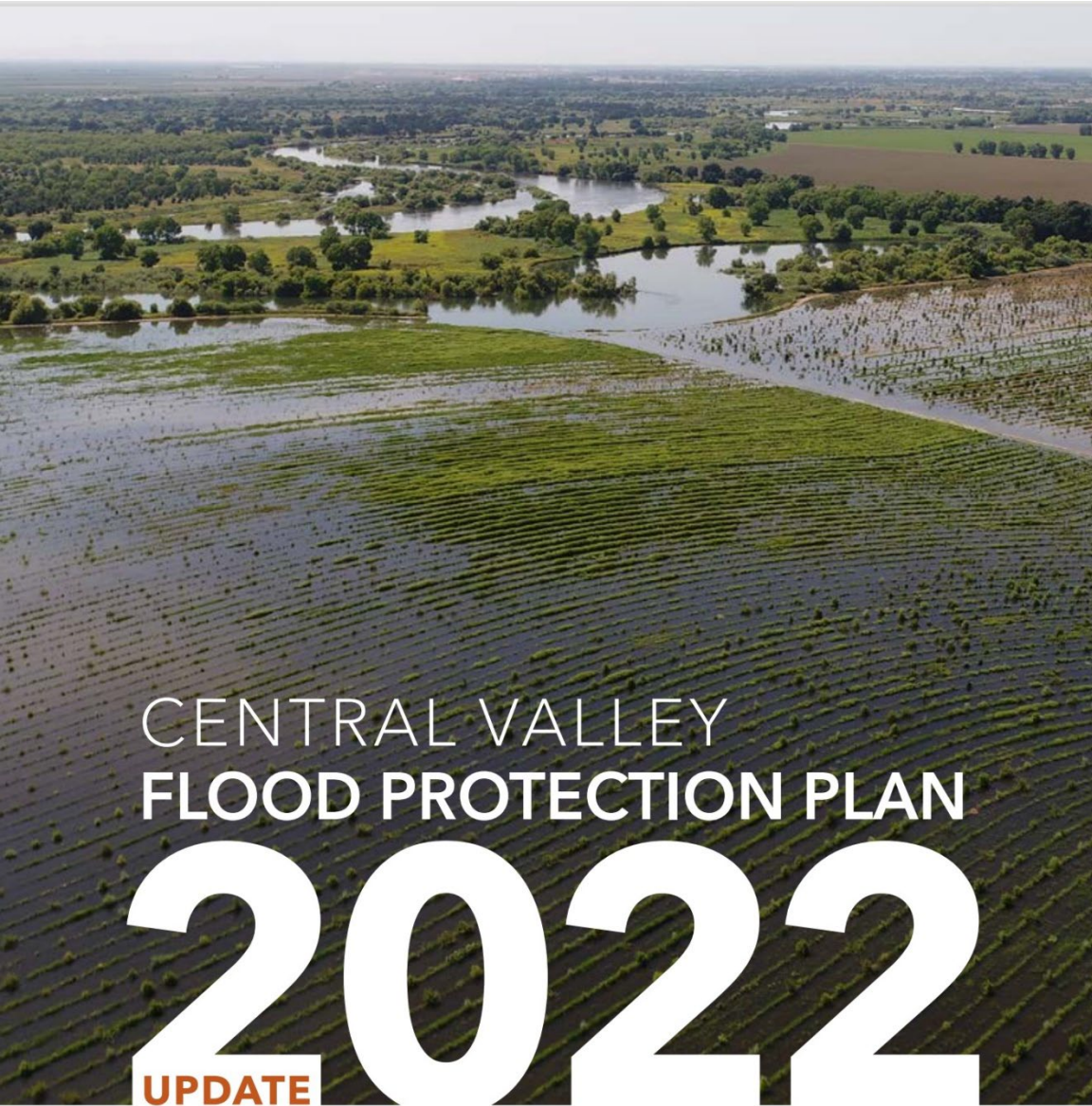


Biodiversity Restoration



*“Of the three approaches to rebalancing the San Joaquin River—litigation, regulation, and **multi-benefit restoration**—the latter holds great promise for improving ecosystem conditions while reconnecting the river to its many diverse communities.”*

- Public Policy Institute of California



California town wonders if restored floodplain prevented disaster

BY DANIEL TROTTA

February 6, 2023

GRAYSON, Calif., Feb 4 (Reuters) - When devastating floods swept California last month, the community of Grayson - a town of 1,300 people tucked between almond orchards and dairy farms where the San Joaquin and Tuolumne rivers converge - survived without major damage.

In the minds of some townspeople and experts, that was thanks partly to the 2,100 acres (850 hectares) of former farmland just across the San Joaquin that have been largely restored to a natural floodplain.

Advocates for floodplain restoration say it can help solve California's dual dangers of flooding and drought, replenishing groundwater for future



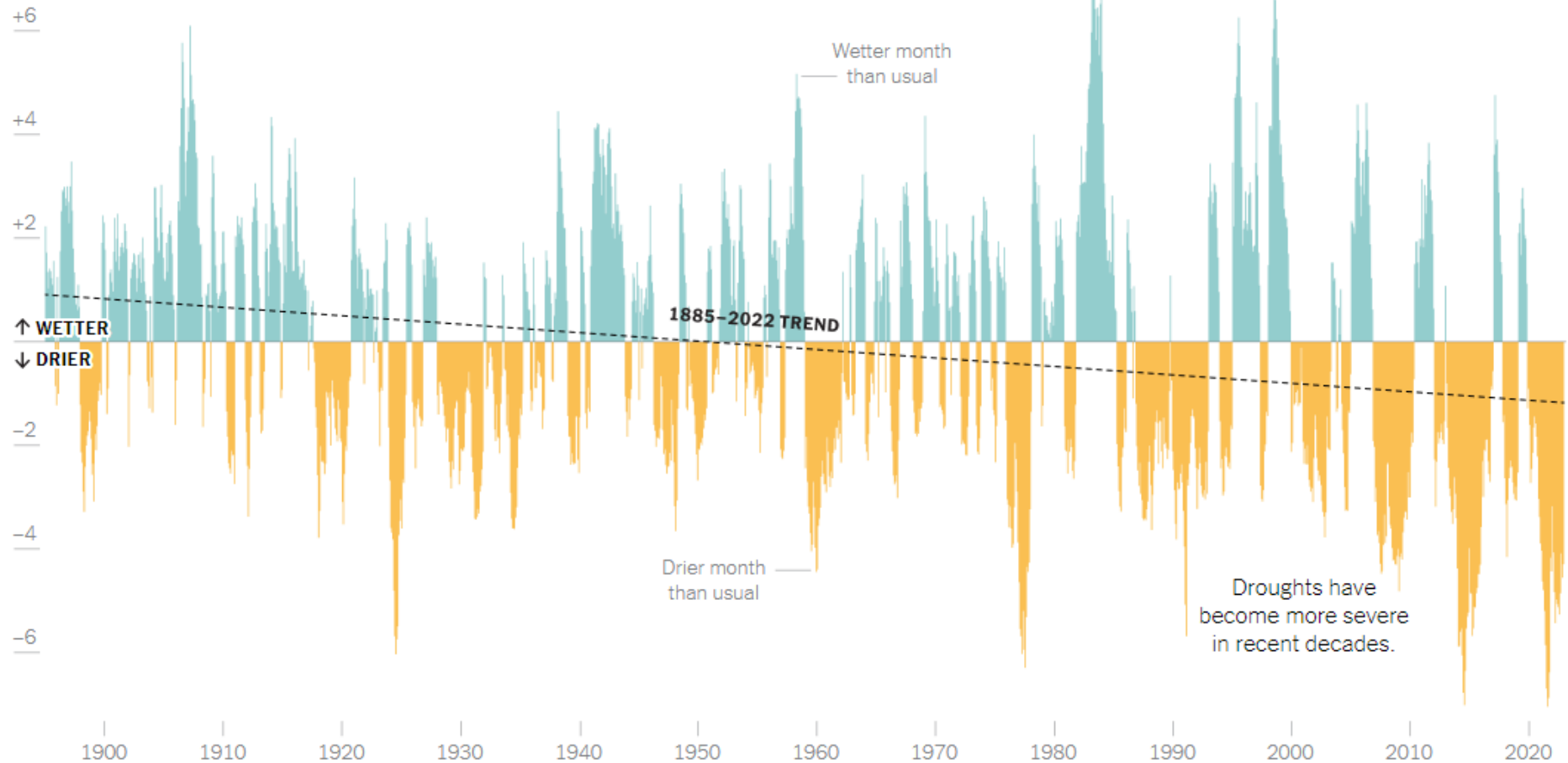
(Above) An aerial view shows homes in the town of Grayson near flood waters from the San Joaquin River in Grayson, California *REUTERS/Nathan Frandino*

Climate Resilience

California's Water Whiplash

Recent storms come amid one of the worst droughts the state has seen. Intense rainfall during droughts is dangerous because parched ground becomes less absorbent and more prone to runoff and landslides.

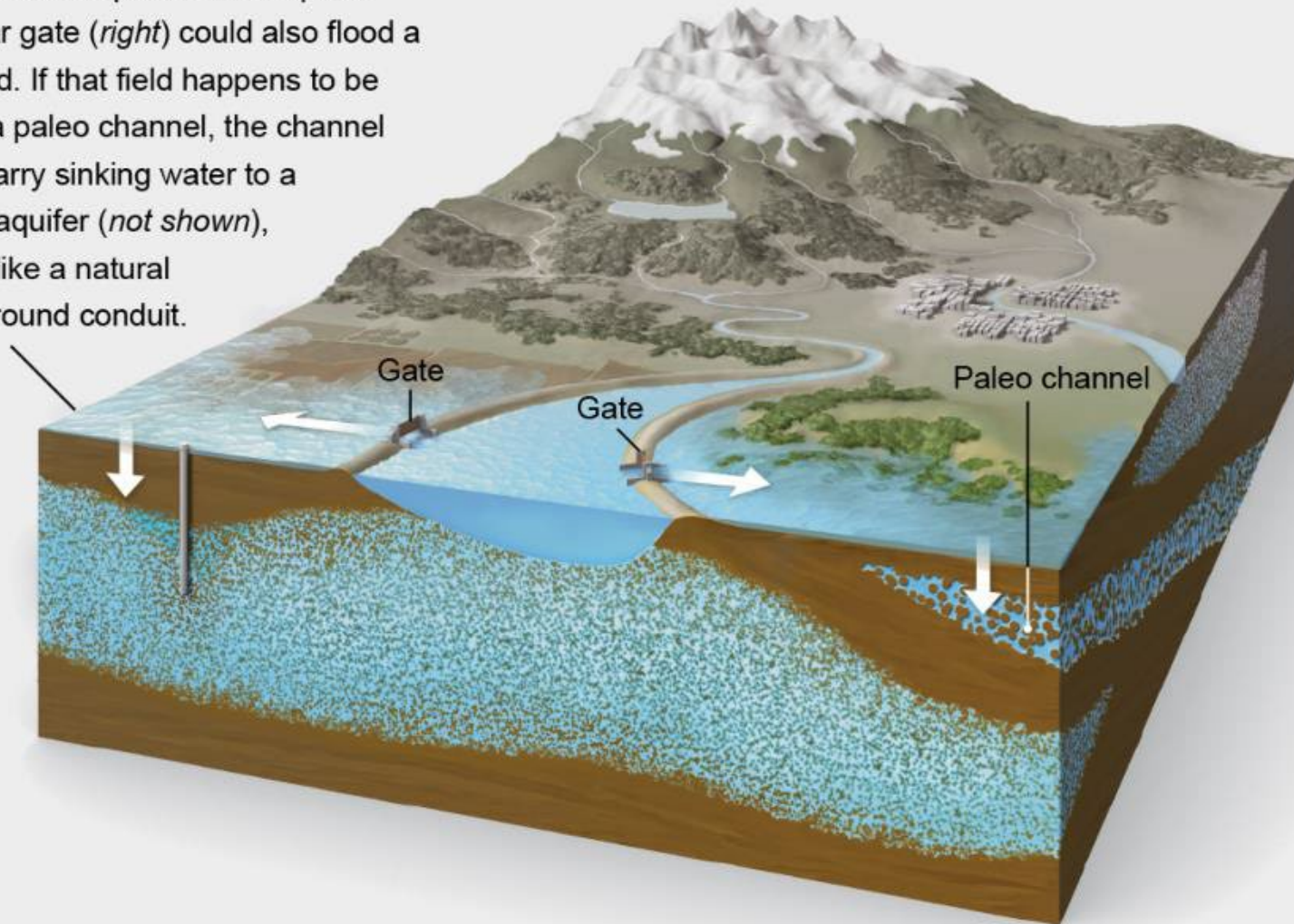
Palmer Drought Severity Index



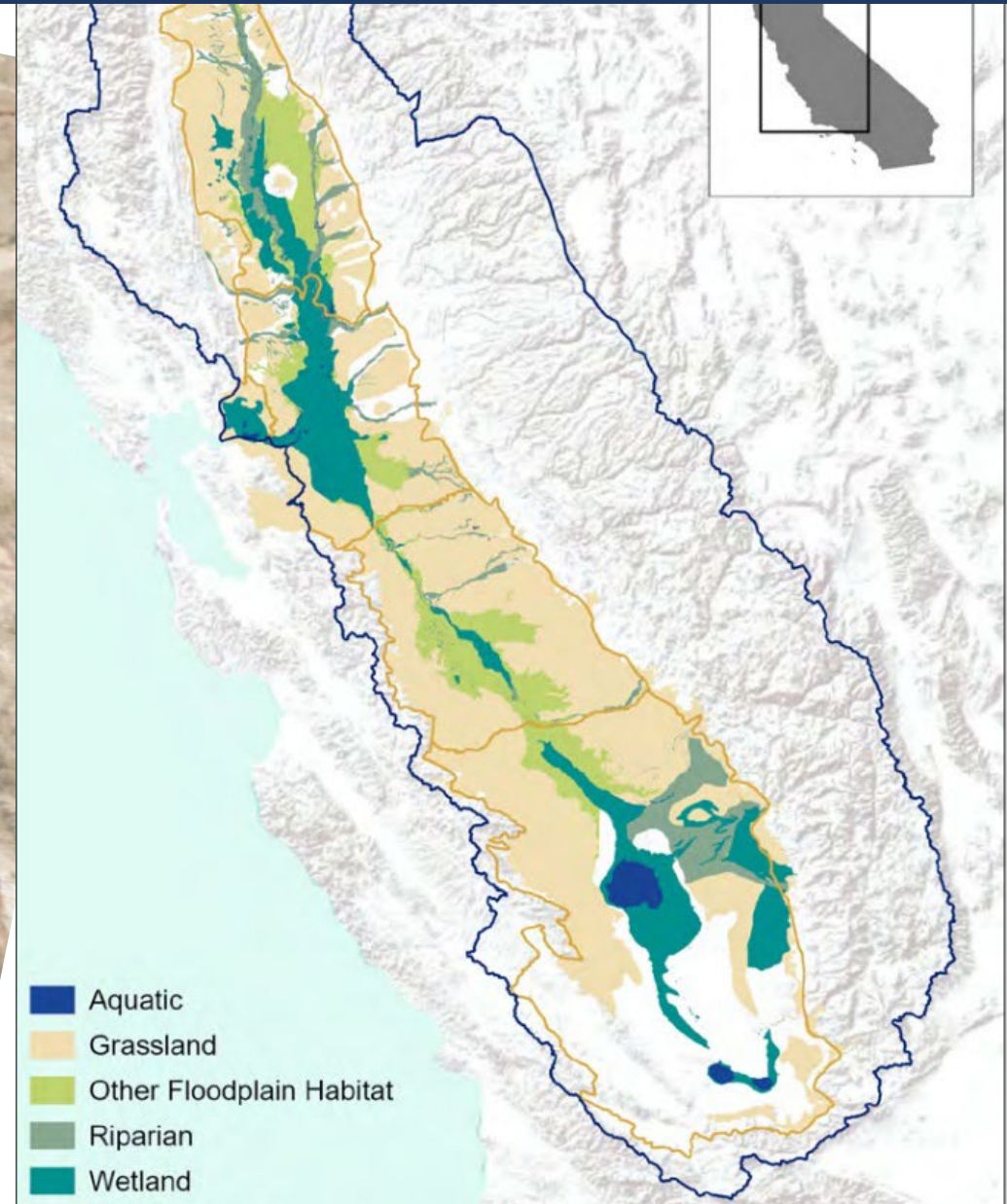
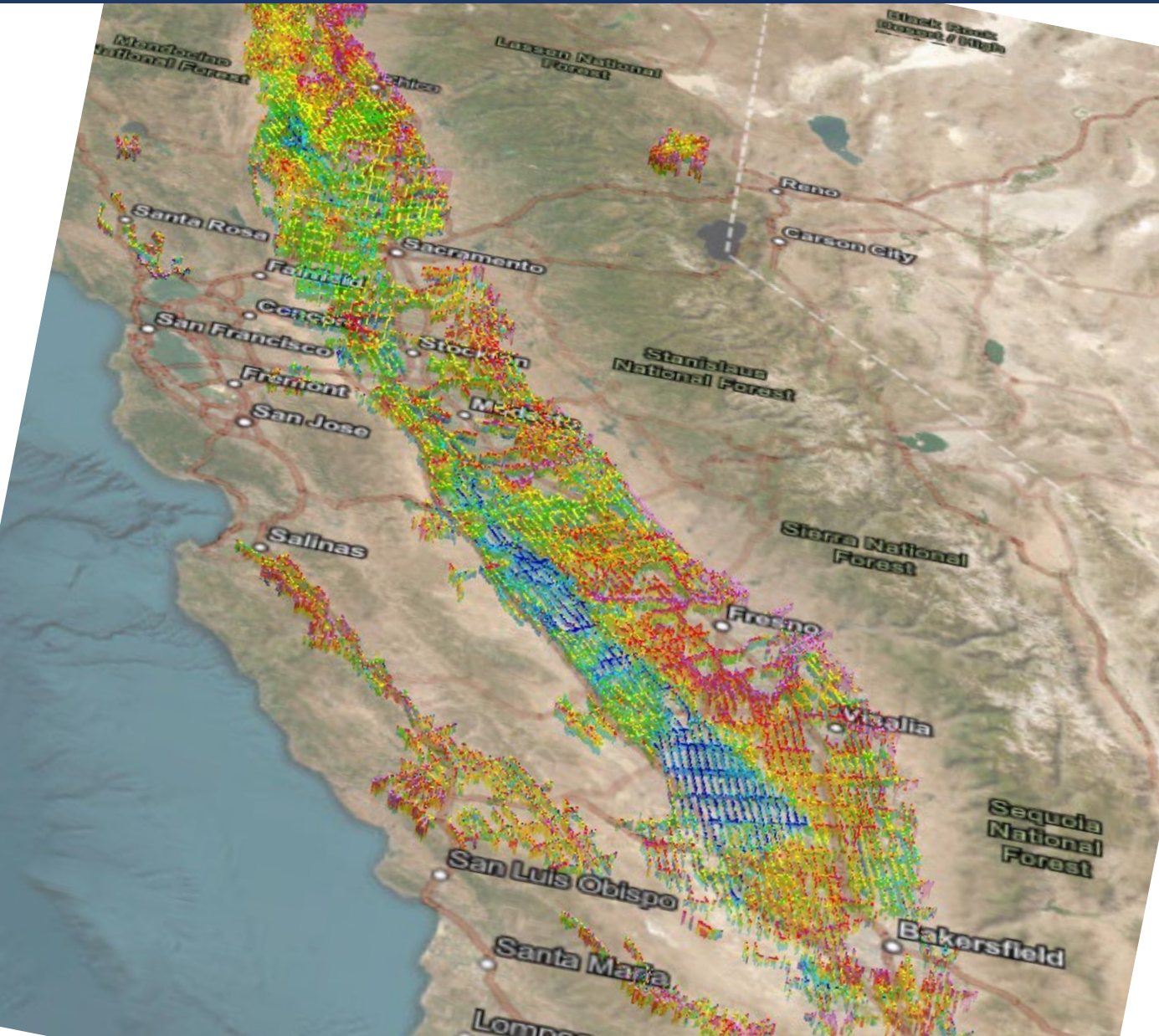
Source: NOAA National Centers for Environmental Information • By Mira Rojanasakul

Increasing Water Storage with Floodplain Restoration

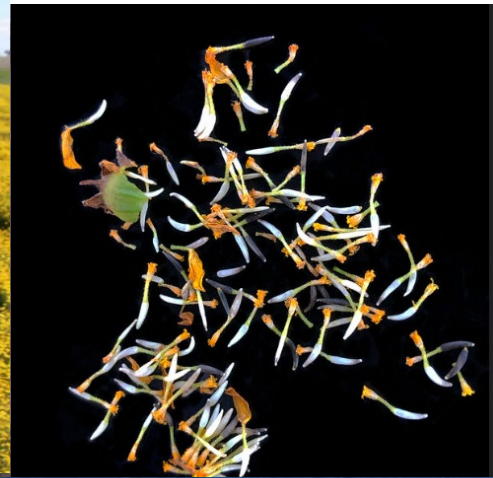
A gate in a levee (*left*) can release high river water onto a farm field so it percolates down to replenish the aquifer. A similar gate (*right*) could also flood a wild field. If that field happens to be above a paleo channel, the channel could carry sinking water to a distant aquifer (*not shown*), almost like a natural underground conduit.



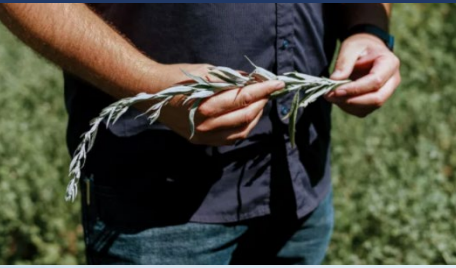
We need to scale



Expanding the Ecosystem Restoration Sector



Cultural Reconnection





RIVER
PARTNERS