

Wildfire Resilience: California State Parks

Sara Barth, Executive Director
Sempervirens Fund



Sempervirens & Origin of California State Parks

- Sempervirens established 1900 - response to clear cutting of redwoods
- Donates 6 square miles of old growth to the state, establishing oldest state park - Big Basin
- Advocates for creation of California State Park System
- Champions a preservation and outdoor recreation mindset



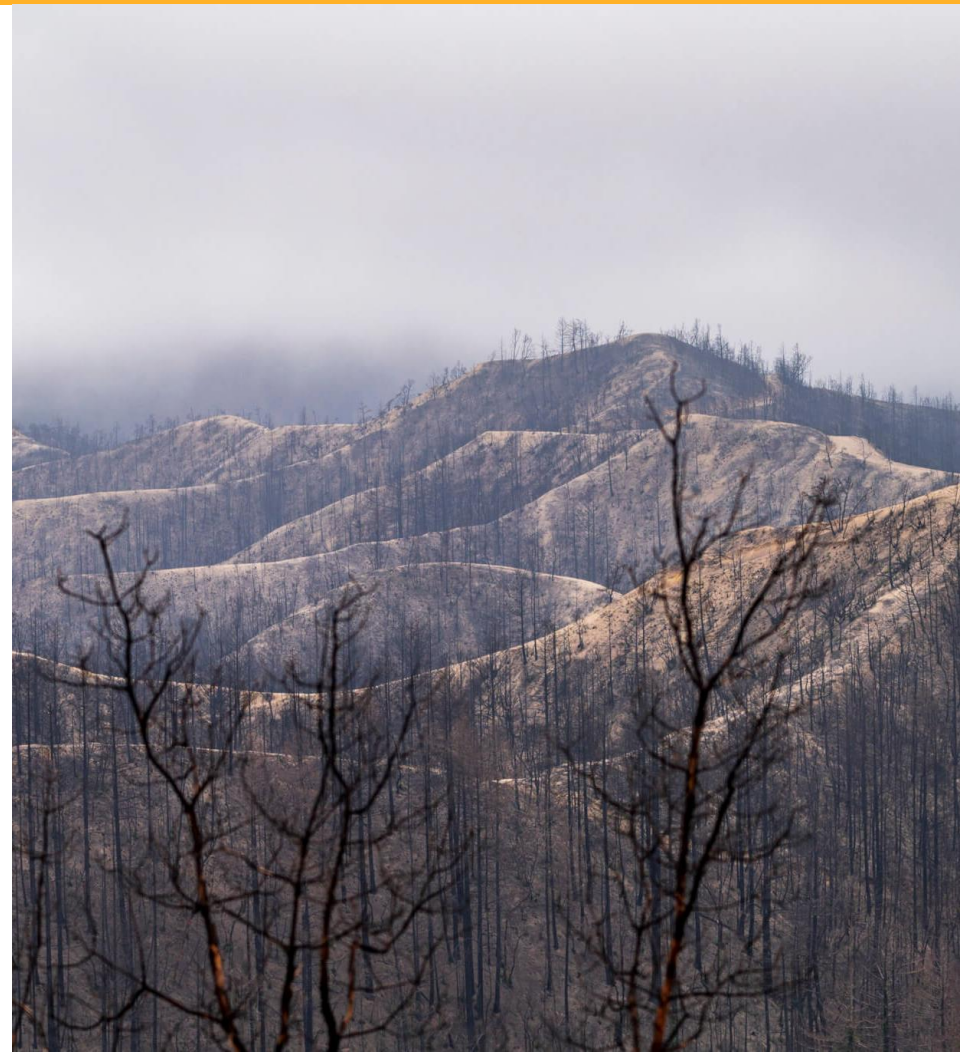
CZU Wildfire and Big Basin Redwoods State Park

A new reality for State Parks and partners



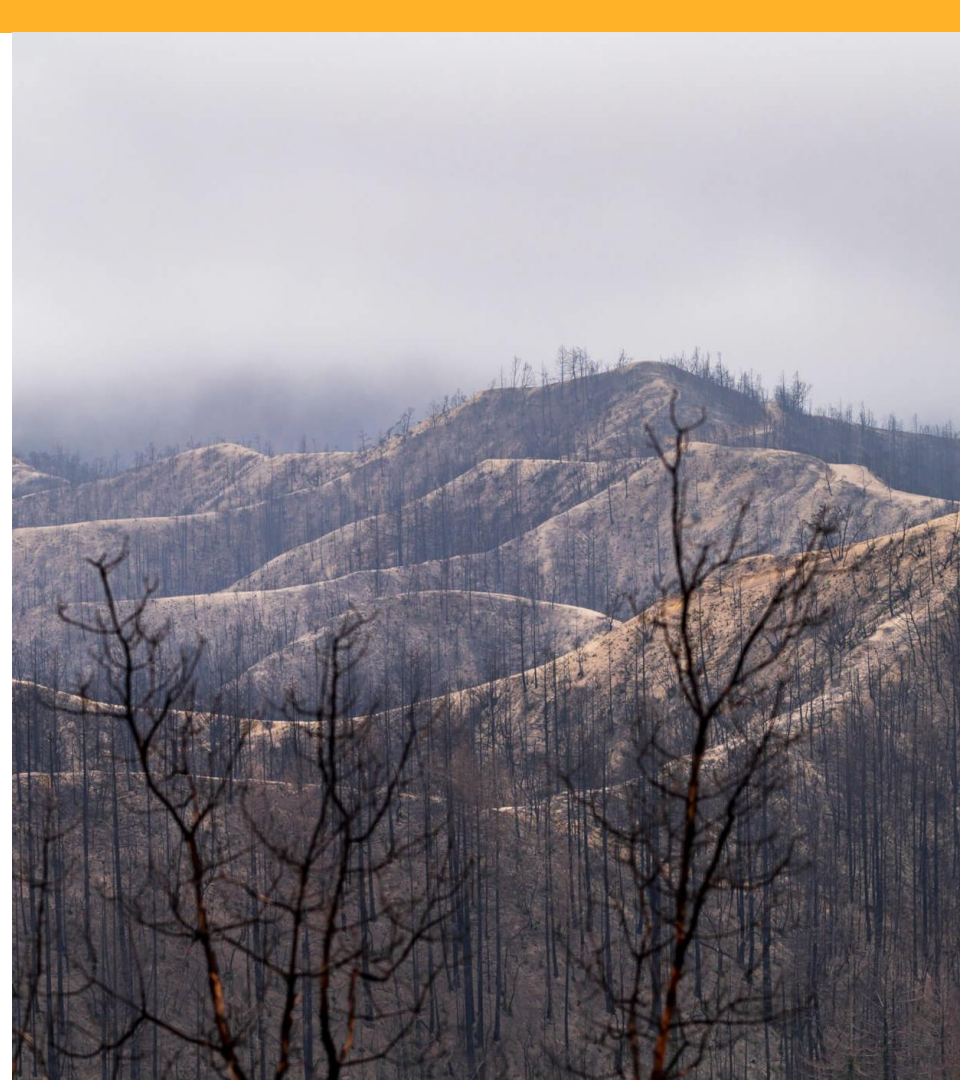
Changed Landscape

- Nearly all 18,000 acres of Big Basin burned
- 95% park infrastructure destroyed
- Trail system heavily impacted



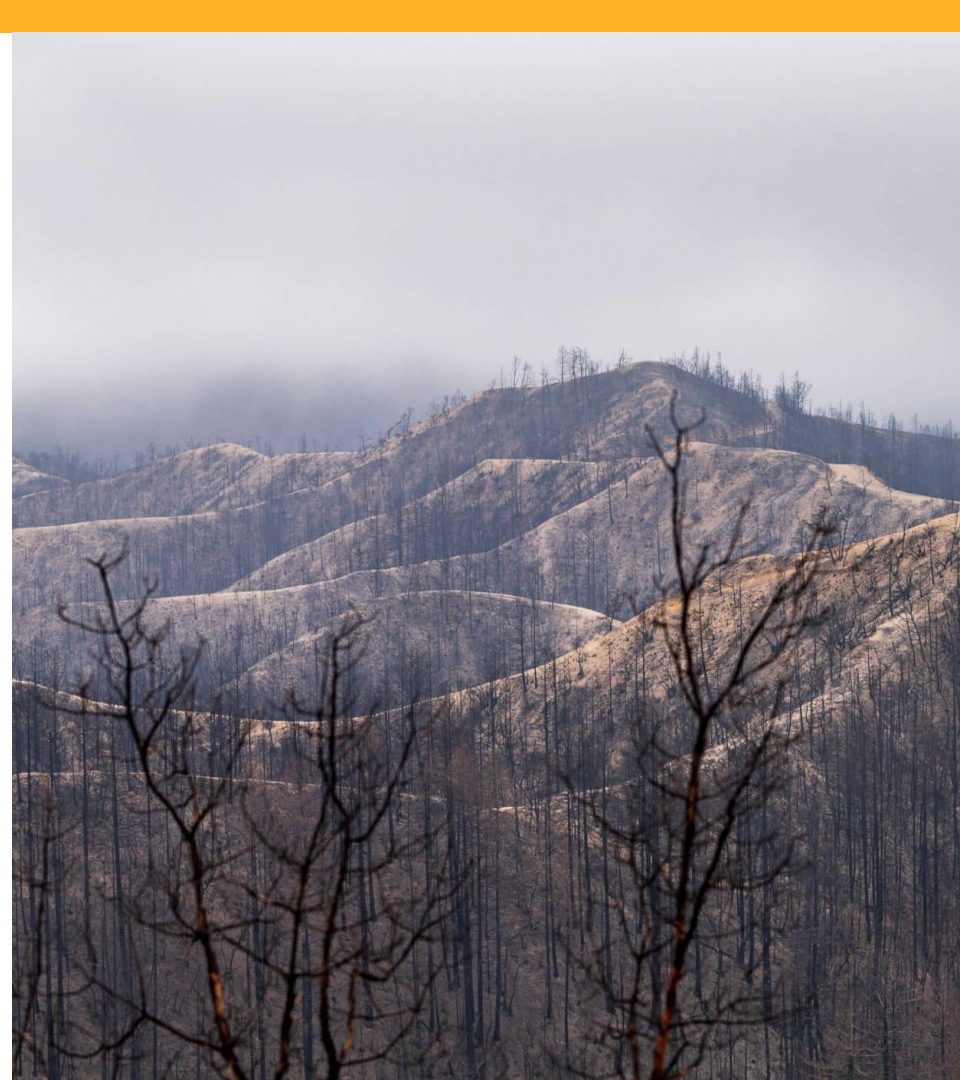
Changed Community

- 1,000 structures destroyed
- Nearly 700 single family homes lost
- 77,000 people evacuated
- \$68 million in costs to fight the fire
- Disadvantaged community hit hardest



Changed Mindset

- Extreme wildfire: existential threat to State Parks
- Fate of parks/forests tied to fate of the communities
- Active forest management is a necessity to reduce wildfire risk
- Forest management must transcend land ownership boundaries



Partners: Post-Fire Response

Emergency funding, educating the public



Emergency Response

- Sempervirens raised immediate post-fire recovery funds for Big Basin and Butano
 - Strategic limbing of iconic old-growth redwoods (\$50K +)
 - Invasive weed treatment and removal across Big Basin (\$60K)
 - Temporary visitor's kiosk at former Big Basin headquarters, wayfinding signage, portable restrooms rental/servicing (\$125K +)
 - Debris removal not covered by FEMA (\$25K)
 - Trail crew support (shower house, basic equipment) (\$60K +)
- Private dollars leveraged to stretch public dollars
- Allowed State Parks to act very quickly post-fire

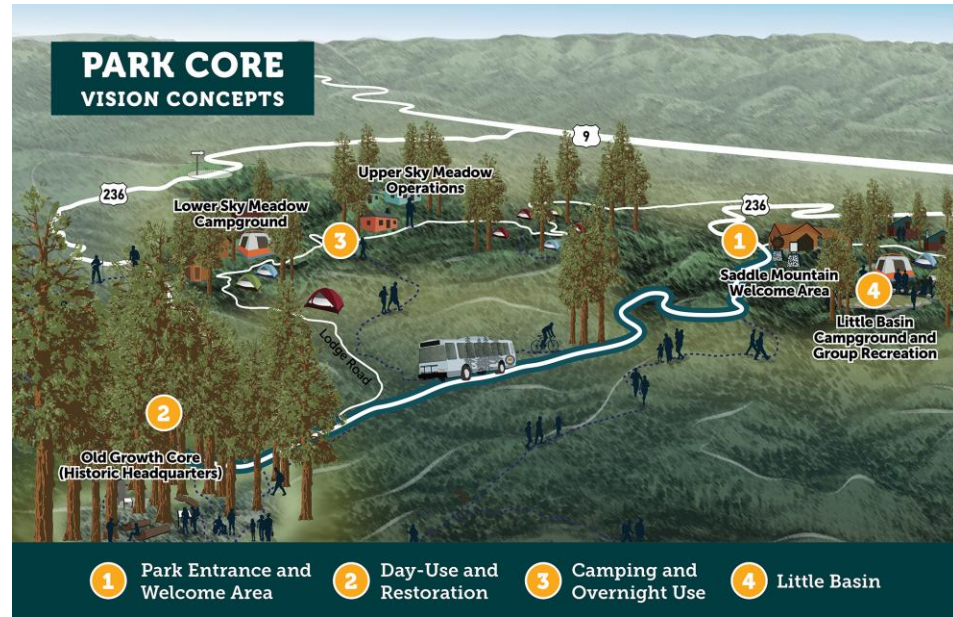
Partners: Supporting Wildfire Resilience in State Parks

Planning, land acquisition, educating the public



Planning for Wildfire Resilient Parks

- Served on Reimagining Big Basin advisory committee – vision for large scale forest management and prescribed fire
- Served on facility planning process for Big Basin - fire considerations in facilities
- Served on Path Forward to shape next five years at State Parks – ensure wildfire resilience is considered



Park Expansion to Promote Resilience

- Partnered with State Parks to prioritize land acquisition necessary to promote wildfire resilience in Big Basin, Butano, and Año Nuevo State Parks
- Acquired land needed by State Parks to move visitor facilities out of sensitive old growth areas and protect public safety
- Working to purchase land needed by State Parks to support large-scale forest restoration work

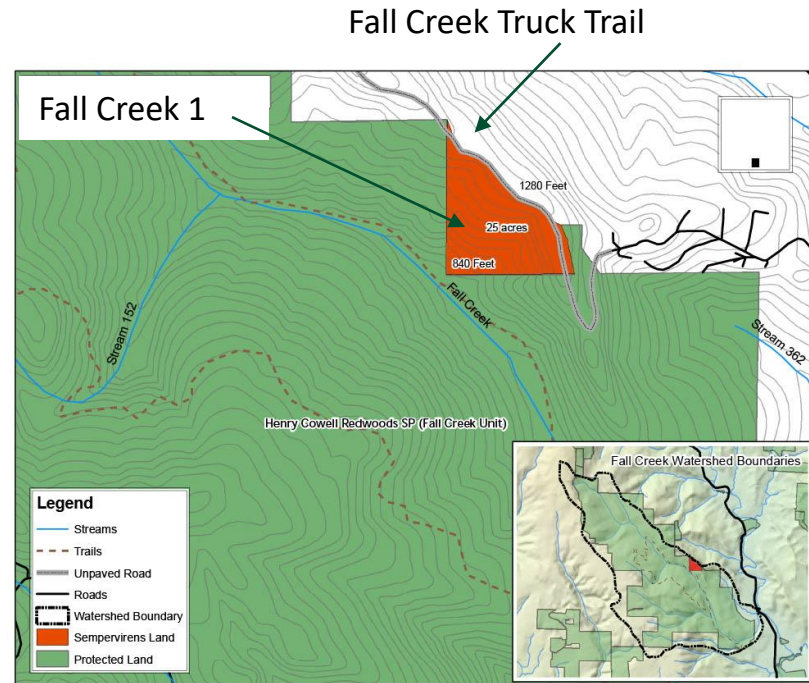
Partners: Fire Mitigation on Neighboring Land

Fuel reduction, prescribed burning, shaded fuel breaks along State Park borders



Fuel Reduction & Shaded Fuel Break (Fall Creek)

- Sempervirens completed a 15-acre fuel reduction project to protect community of Felton community and Fall Creek Unit of Henry Cowell State Park





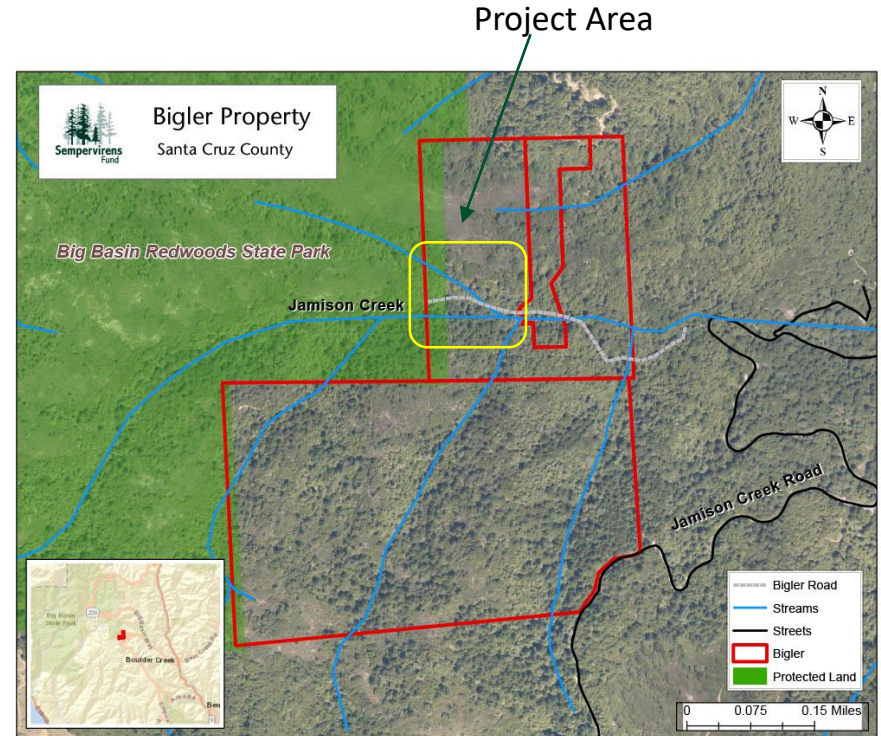
Fall Creek pre-work understory



Fall Creek post-work understory

Fuel Reduction (Jamison Creek/Bigler)

- Sempervirens Fund completed a 5-acre fuel reduction project at our Jamison Creek/Bigler property which will benefit nearby Big Basin.





Jamison Creek pre-work



Jamison Creek post-work



Jamison Creek pre-work

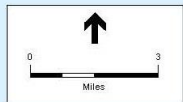


Jamison Creek post-work

Partners: Developing Forest Management Models

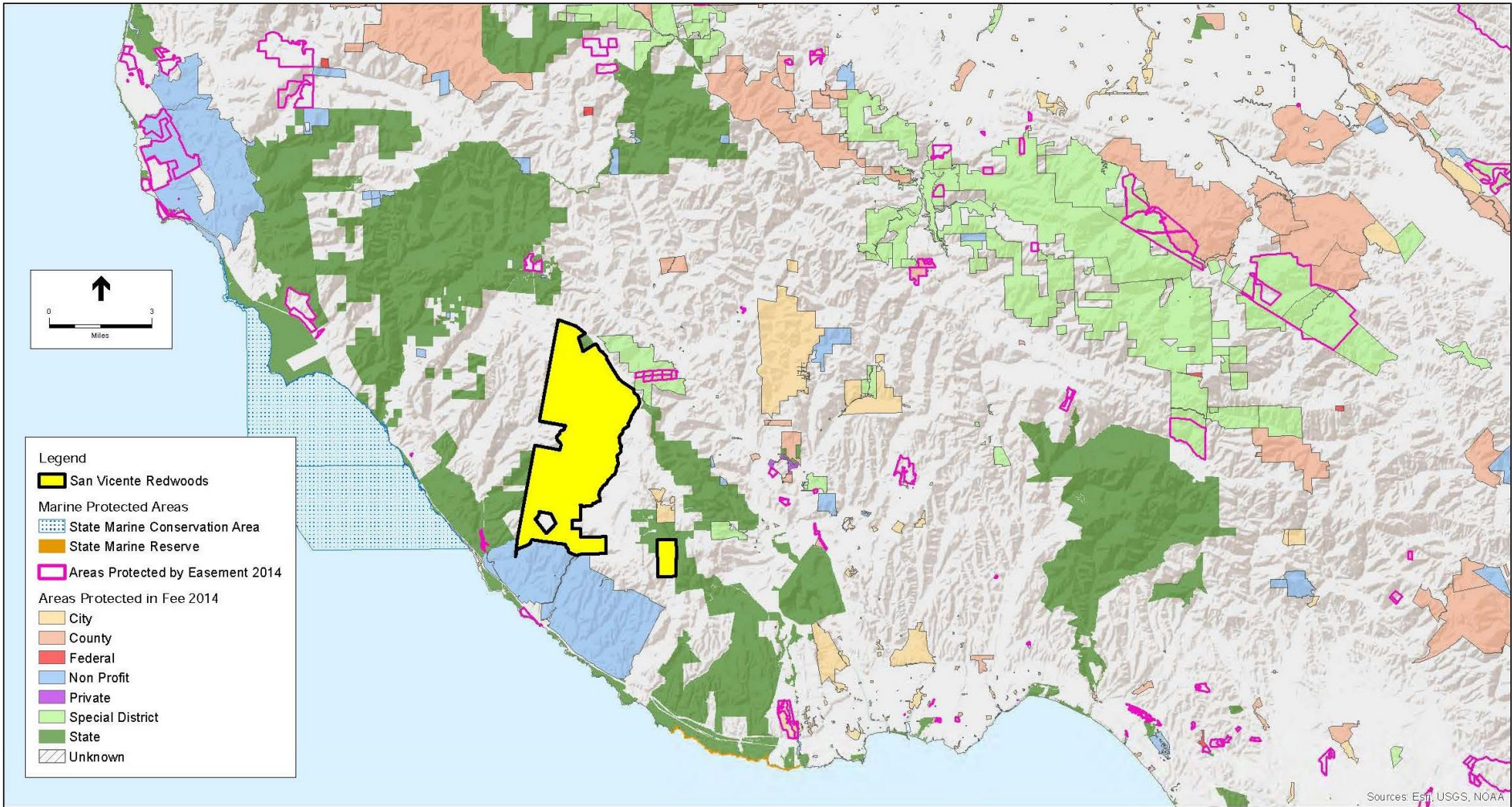
Large scale on the ground forest management efforts to learn and model new approaches





Legend

- San Vicente Redwoods
- Marine Protected Areas**
 - State Marine Conservation Area
 - State Marine Reserve
- Areas Protected by Easement 2014
- Areas Protected in Fee 2014**
 - City
 - County
 - Federal
 - Non Profit
 - Private
 - Special District
 - State
 - Unknown



Shaded Fuel Breaks



Before thinning



After thinning



Before thinning



After thinning

Other Strategies to Reduce Risk of Catastrophic Fire

How to deal with biomass?

- Carbonators/Air Curtain Burners (ACB)
- Prescribed Fire



Biomass Processing: ACB and Carbonators



Ventana Carbonator operations at Swanton Ranch 11/22/2022



Ventana adding logs to kiln. Trees were burned in the 2020 CZU wildfire

Prescribed Burning



Prescribed Burn Area

Creek

Tree farm



Empire
Grade Rd



PG&E line



BEFORE FIRE

Tree farm



Empire
Grade
Rd



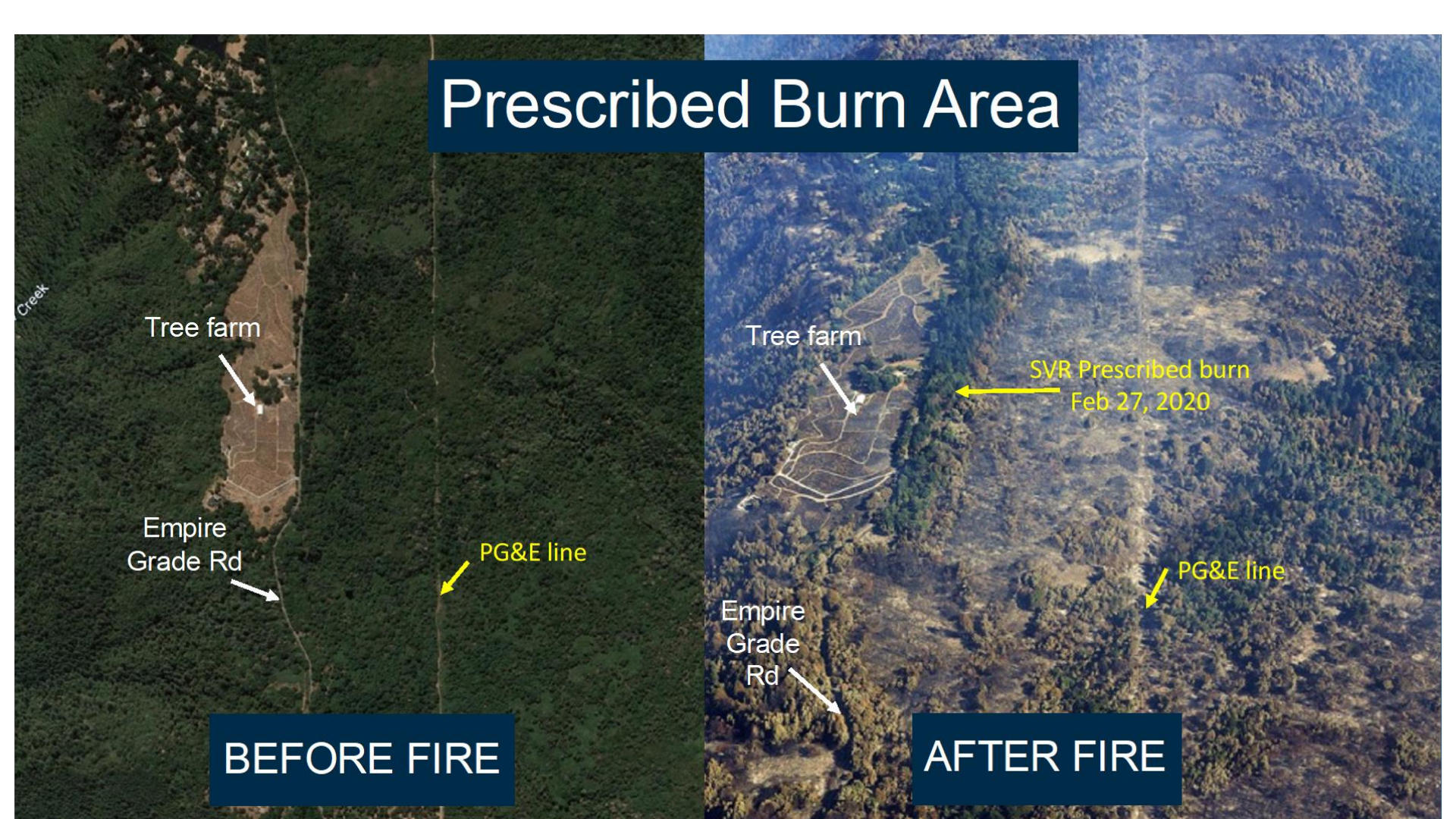
SVR Prescribed burn
Feb 27, 2020



PG&E line



AFTER FIRE



Moving Forward: Challenges to Resiliency Projects



Funding insufficient for prescribed burns and fuel breaks



High level of expertise and staffing needed, especially for prescribed burning



Permitting and regulatory barriers are significant for prescribed burning, air curtain burners and carbonators

State Parks Need Your Help

- Partners are stepping up to support wildfire resilience in State Parks
- State Parks staff understand the challenge
- Additional leadership needed to:
 - Support funding for forest management and improved infrastructure
 - Champion expansion of State Parks to address climate resilience
 - Provide regulatory relief to scale up prescribed burning and fuel treatments
 - Explain these issues to the public